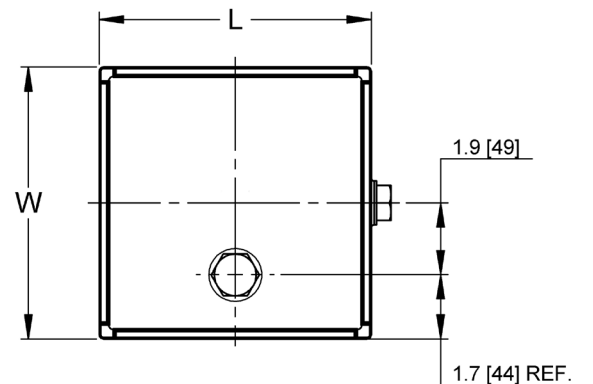
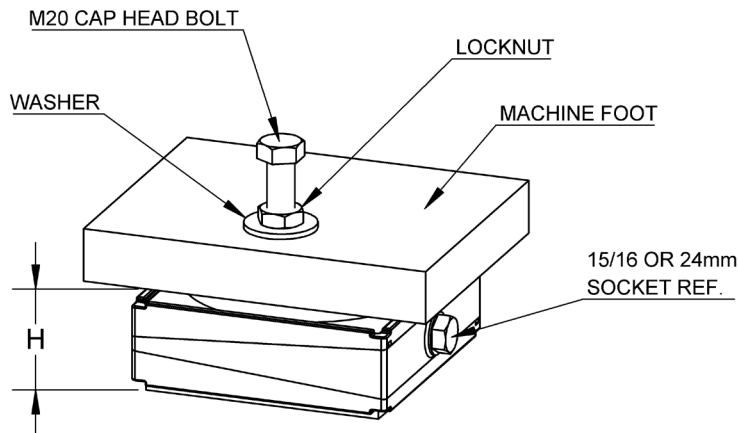


- Custom engineered elastomeric isolator
- Wedge leveling mechanism quickly levels and aligns machines
- Swivel dish feature compensates for sloped floors, evenly loading isolator
- Patented Glide-Ring® feature dissipates horizontal forces to prevent walking
- Proprietary nitrile elastomer resilient cushions with excellent oil and chemical resistance
- Protect equipment and surroundings from vibration
- Optional bolt(s) to secure isolator to foot
- Meets OSHA anchoring requirements

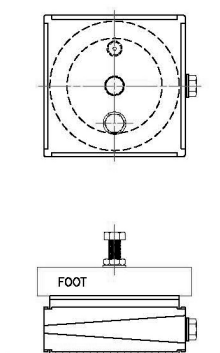


Isolator		L		W		H ±1/8" (3mm)				Weight	
Series	Model					Minimum		Maximum			
		inch	mm	inch	mm	inch	mm	inch	mm	lbs	Kg
7W	7WNB	7.3	185	7.3	185	2.37	60	2.87	73	22	10
7W	7WNF	7.3	185	7.3	185	2.37	60	2.87	73	22	10
7W	7WNT	7.3	185	7.3	185	2.37	60	2.87	73	22	10
7W	7WB	7.3	185	7.3	185	2.72	69	3.22	82	24	11
7W	7WT	7.3	185	7.3	185	2.72	69	3.22	82	24	11

ISOLATOR MODEL KEY

7WB – Swivel with Bolt-on
7WNF – Non Swivel, Free Standing
7WNB – Non Swivel with Bolt-On
7WT – Swivel with Bolt-Thru
7WNT – Non Swivel with Bolt-Thru

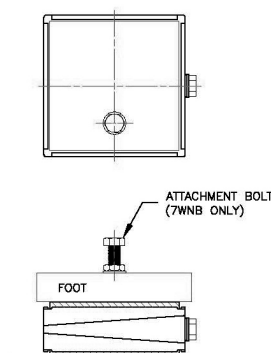
7WB



7WB

- designed for machine with mounting holes.
- spherical swivel seat provides up to 3° of tilt for uniform support of machine feet and loading of mount.

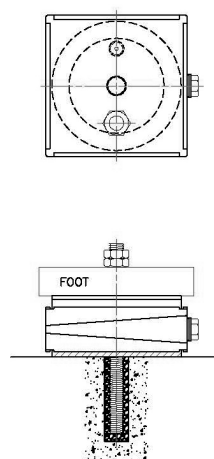
7WNF & 7WNB



7WNF & 7WNB

- designed for machine without mounting holes or mounting holes that are too small.
- can be located anywhere under the machine that needs support.
- top & bottom surfaces have non-slip material.

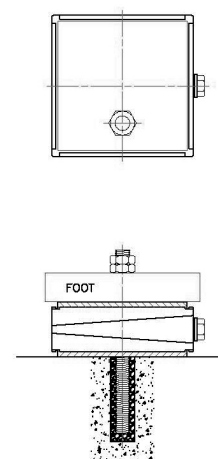
7WT



7WT

- for machines that require anchoring to the floor due to low machine bed rigidity (e.g. long bed lathes, boring machines, milling and machine centers).
- spherical swivel seat provides up to 3° of tilt for uniform support of machine feet and loading of mount.
- anchor sizes: 1/2" - 3/4" (12mm-19mm)

7WNT



7WNT

- for machines that require anchoring to the floor due to low machine bed rigidity (e.g. long bed lathes, boring machines, milling and machine centers).
- top & bottom surfaces have conforming elastomer pad material.
- anchor sizes: 1/2" - 3/4" (12mm-19mm)

NOTE: Isolator data subject to change without notice.



10/05/23

Socitec US LLC
 2243 Braga, Drive, Broadview, IL 60155
 tel.: 800.842.7668 • vibro@vibrodynamics.com
www.vibro-dynamics.com