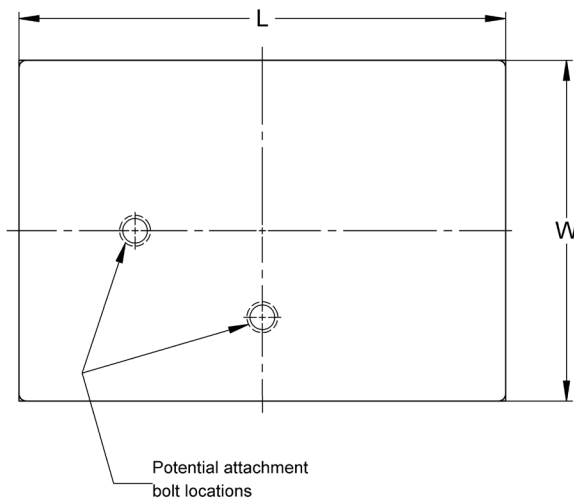
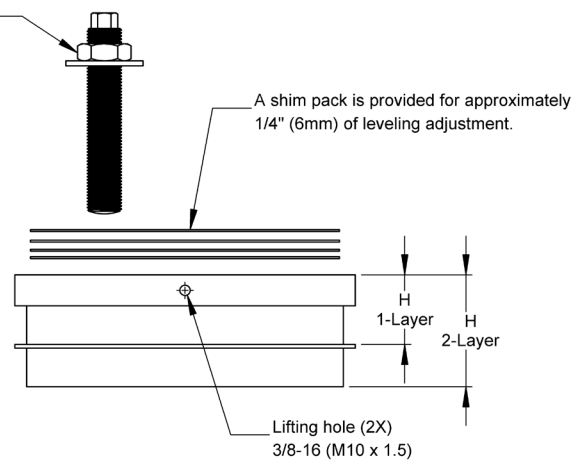
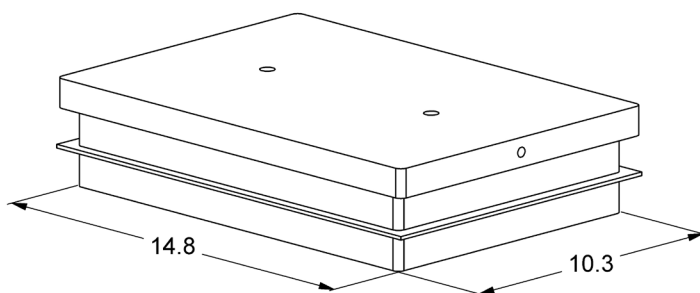


- Excellent isolation for effective control of vibration and shock.
- High-performance, multi-layer, modular elastomer construction.
- Shim leveling using metal shims supplied by Vibro/Dynamics.
- Large anchor bolts not required to keep machine from walking.
- Grout or sole plates are recommended, but usually not required due to wide foundation tilt and slope tolerance.

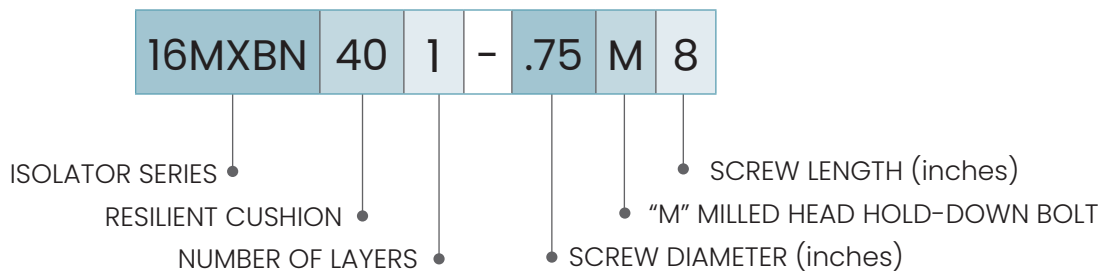
CUSTOM DESIGNS & SIZES ARE AVAILABLE



Optional attachment bolt
For anchoring machine foot to isolator.
Location varies with each order.



Isolator			L		W		H ±1/8" (3mm)		Foundation Tolerances				Weight	
							Min. Installed Ht.		Flatness ±		Slope in/ft			
Series	Model	inch							mm	inch	mm	inch		
		16MXBN	1 Layer	16MXBN401	15.8	401	11	279	2.8	71	0.07	1.8	0.04	1.0
16MXBN471	15.8			401	11	279	2.8	71	0.07	1.8	0.04	1.0	86	39
16MXBN621	15.8			401	11	279	2.4	61	0.05	1.3	0.03	0.8	83	38
16MXBN721	15.8			401	11	279	2.2	56	0.04	1.0	0.03	0.8	82	37
16MXBN801	15.8			401	11	279	1.9	48	0.03	0.8	0.02	0.5	80	36
2 Layer	16MXBN472		15.8	401	11	279	4.6	117	0.07	1.8	0.08	2.0	112	51
	16MXBN622		15.8	401	11	279	4.0	102	0.05	1.3	0.07	1.8	107	49
	16MXBN722		15.8	401	11	279	3.5	89	0.04	1.0	0.05	1.3	105	48
	16MXBN802		15.8	401	11	279	2.9	74	0.03	0.8	0.03	0.8	100	45



TYPICAL APPLICATIONS

- Presses, Mechanical
- Forging Presses
- Transfer Presses
- Hydraulic Presses
- Isolated Foundations
- Structures

NOTE: Isolator data subject to change without notice.

09/22/2023



Socitec US LLC
 2243 Braga. Drive, Broadview, IL 60155
 tel.: 800.842.7668 • vibro@vibrodynamics.com
 www.vibro-dynamics.com