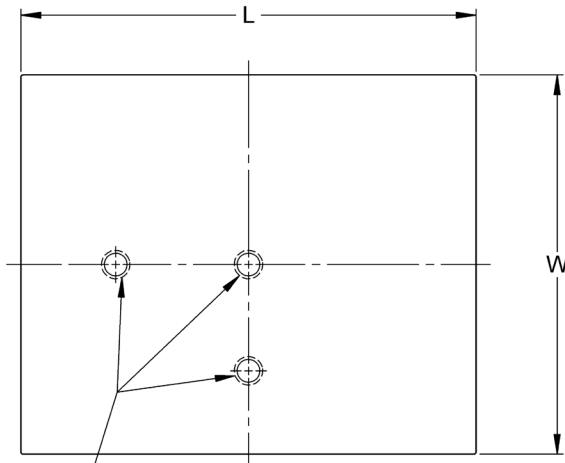


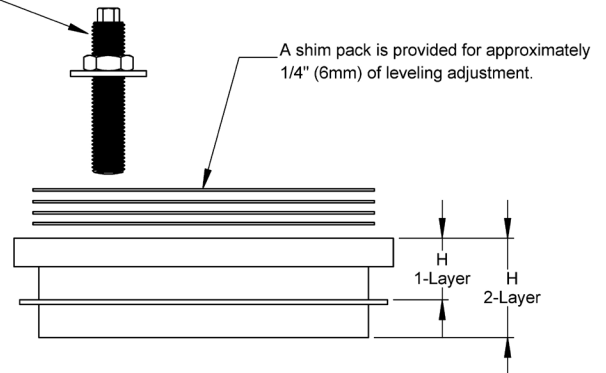
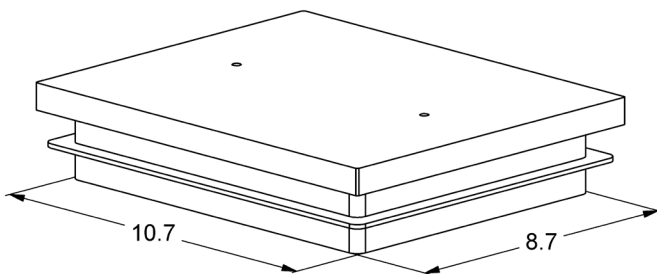
- Excellent isolation for effective control of vibration and shock.
- High-performance, multi-layer, modular elastomer construction.
- Shim leveling using metal shims supplied by Vibro/Dynamics.
- Large anchor bolts not required to keep machine from walking.
- Grout or sole plates are recommended, but usually not required due to wide foundation tilt and slope tolerance.

CUSTOM DESIGNS & SIZES ARE AVAILABLE

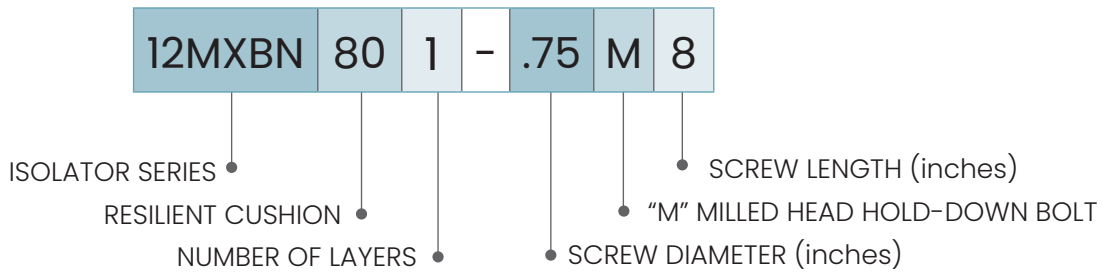


Potential attachment bolt locations.

Optional attachment bolt
For anchoring machine foot to isolator.
Location varies with each order.



Isolators		L		W		H ±1/8" (3mm)		Foundation Tolerances				Weight		
Series	Model					Min. Installed Ht.		Flatness ±		Slope in/ft				
		inch	mm	inch	mm	inch	mm	inch	mm	lbs.	Kg			
12MXBN	1 Layer	12MXBN8801	12.0	305	10.0	254	2.1	53	0.07	1.8	0.04	1.0	44	20
		12MXBN11001	12.0	305	10.0	254	2.1	53	0.07	1.8	0.04	1.0	44	20
		12MXBN15001	12.0	305	10.0	254	1.5	38	0.04	1.0	0.03	0.8	40	18
		12MXBN22001	12.0	305	10.0	254	1.2	30	0.03	0.8	0.02	0.5	39	18
	2 Layer	12MXBN8802	12.0	305	10.0	254	3.5	89	0.07	1.8	0.09	2.3	55	25
		12MXBN11002	12.0	305	10.0	254	3.6	91	0.07	1.8	0.09	2.3	55	25
		12MXBN15002	12.0	305	10.0	254	2.5	64	0.04	1.0	0.05	1.3	49	22
		12MXBN22002	12.0	305	10.0	254	1.7	43	0.03	0.8	0.03	0.8	45	20



TYPICAL APPLICATIONS

- Presses, Mechanical
- Forging Presses
- Transfer Presses
- Hydraulic Presses
- Isolated Foundations
- Structures

NOTE: Isolator data subject to change without notice.

09/22/2023

