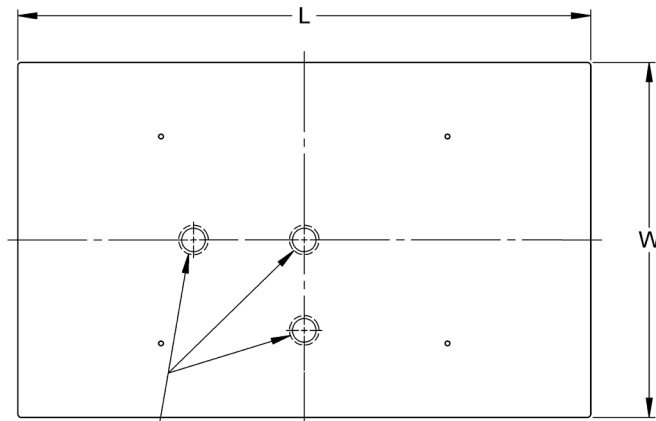


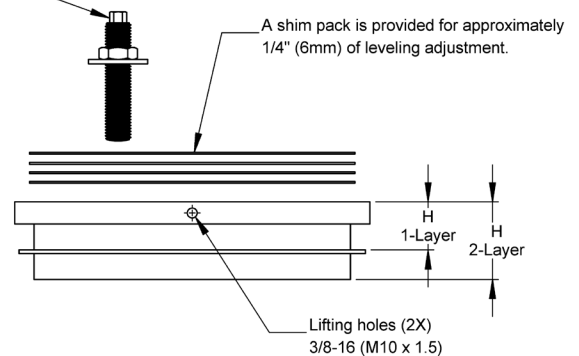
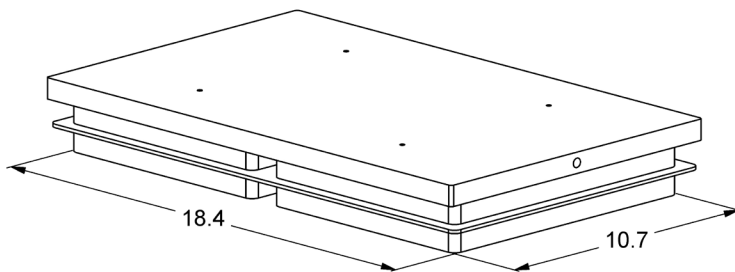
- Excellent isolation for effective control of vibration and shock.
- High-performance, multi-layer, modular elastomer construction.
- Shim leveling using metal shims supplied by Vibro/Dynamics.
- Large anchor bolts not required to keep machine from walking.
- Grout or sole plates are recommended, but usually not required due to wide foundation tilt and slope tolerance.

CUSTOM DESIGNS & SIZES ARE AVAILABLE

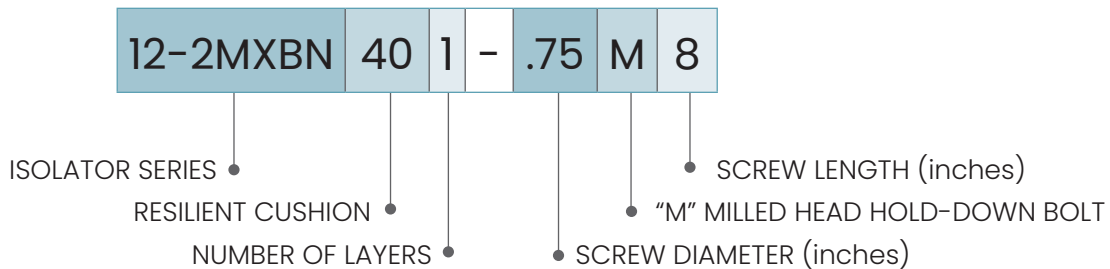


Potential attachment  
bolt locations

**Optional attachment bolt**  
For anchoring machine foot to isolator.  
Location varies with each order.



Isolator		L		W		H ±1/8" (3mm)		Foundation Tolerances				Weight		
Series	Model					Min. Installed Ht.		Flatness ±		Slope in/ft				
		inch	mm	inch	mm	inch	mm	inch	mm	inch	mm	lbs.	Kg	
12-2MXBN	1 Layer	12-2MXBN8801	19.4	493	12.0	305	2.2	56	0.07	1.8	0.05	1.3		
		12-2MXBN11001	19.4	493	12.0	305	2.2	56	0.07	1.8	0.05	1.3		
		12-2MXBN15001	19.4	493	12.0	305	1.6	41	0.04	1.0	0.03	0.8		
		12-2MXBN22001	19.4	493	12.0	305	1.2	30	0.02	0.5	0.02	0.5		
	2 Layer	12-2MXBN8802	19.4	493	12.0	305	3.6	91	0.07	1.8	0.09	2.3		
		12-2MXBN11002	19.4	493	12.0	305	3.6	91	0.07	1.8	0.09	2.3		
		12-2MXBN15002	19.4	493	12.0	305	2.5	64	0.04	1.0	0.06	1.5		
		12-2MXBN22002	19.4	493	12.0	305	1.8	46	0.02	0.5	0.03	0.8		



### TYPICAL APPLICATIONS

- Presses, Mechanical
- Forging Presses
- Transfer Presses
- Hydraulic Presses
- Isolated Foundations
- Structures

NOTE: Isolator data subject to change without notice.

09/22/2023



Socitec US LLC  
2243 Braga, Drive, Broadview, IL 60155  
tel.: 800.842.7668 • [vibro@vibro-dynamics.com](mailto:vibro@vibro-dynamics.com)  
[www.vibro-dynamics.com](http://www.vibro-dynamics.com)