

## Installation and Leveling Addendum Instructions for “H” Style Micro/Level Isolators

These instructions are to be used as an addendum to the Installation and Leveling Instructions for Micro/Level Isolators Technical Bulletin M/L 674A. This addendum should be used to install all Micro/Level Isolators that have an “H” at the end of the isolator model number and in the leveling screw model number. For example:

- 8LK220H - 1H5
- 10M1200H - 1.25H8
- 10L900H - 1.25H8
- 10K650H - 1HJ6
- 16M2100H - 1.25H8

“H” Style isolators are Micro/Level Isolators with modified leveling screws and bearing plates. The leveling screws have a smaller, ball-like radius at the end of the leveling screw. The end of the leveling screw then fits into a dimple milled into the bearing plate as shown in *Figure 1*. For proper performance and control of horizontal forces, it is essential that the end of the leveling screw fit concentrically into this dimple in the bearing plate.

The following steps should be done after Step 4 in the Installation and Leveling Instructions for Micro/Level Isolators Technical Bulletin M/L-674A.

1. After lowering the machine foot onto the isolator, look through the machine’s mounting hole to see if the mounting hole, the threaded hole in the isolator and the dimple in the bearing plate are all concentric as per *Figure 2*. A flashlight and mirror may be required.
2. If they are, then proceed to Step 5 in the Installation and Leveling Instructions for Micro/Level Isolators Technical Bulletin M/L-674A.
3. If they are not, then jack up the machine next to the isolator and realign the isolator housing with the bearing plate. The isolator will tend to realign itself when the load is removed.
4. Realign the isolator with the machine’s mounting hole. Installation Tip: Push against the isolator’s elastomer to realign it with the mounting hole. Pushing against the isolator’s housing will cause misalignment since the housing tends to move while the elastomer grips the floor, shifting the two isolator parts relative to each other.
5. Repeat Step 1.

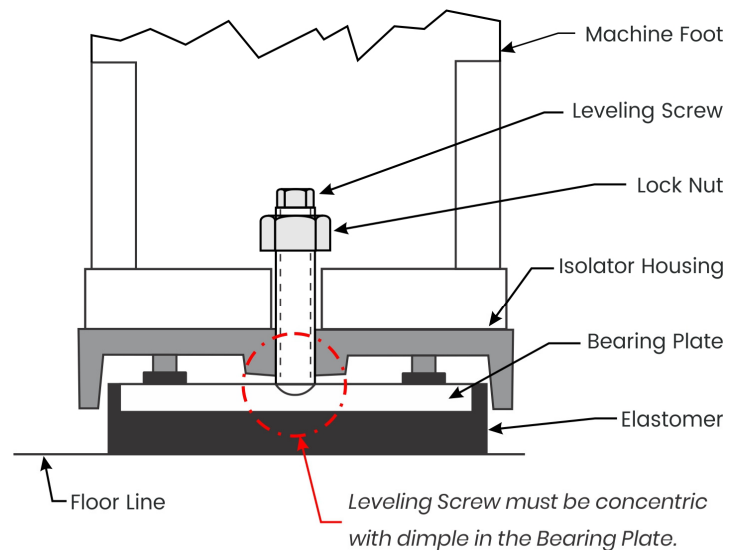


Figure 1

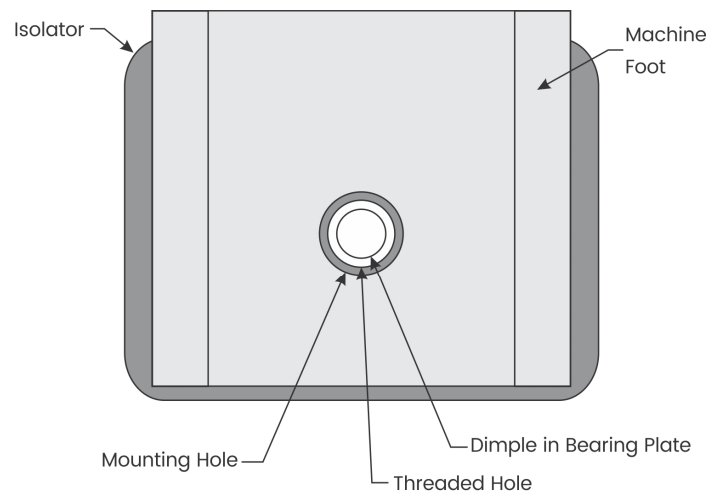


Figure 2