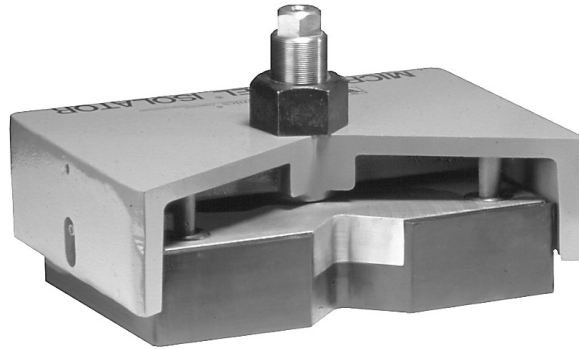


### Instructions for Changing or Replacing Resilient Cushions

For 16 and BFM Series 20, 21, 26, & 27 Micro/Level® Isolators\*



Vibro/Dynamics Technologically Advanced Machinery Mounting Systems are an investment in productivity and efficiency. To realize the full potential of your investment, familiarize yourself with these instructions and use them as a reference while changing the resilient cushions.

After completing the Resilient Member Changeover, follow the “*Leveling and Installation Instructions for Micro/Level Isolators*” (Technical Bulletin M/L- 674) to reinstall your Micro/Level Isolators.

*\*These instructions are designed for Micro/Level Isolator Models beginning with 16, 216, and 20 and BFM Models 1230, 1150, 1340, 1170, 1160, 1350, 2660, 2676, 2690, 26100, 26110, 26135, 1265 and 1305. For all other, larger BFM models, Vibro/Dynamics recommends returning these isolators to its plant for resilient cushion replacements.*

© Copyright 2000–2019 Vibro/Dynamics LLC  
All Rights Reserved

# TECHNICAL BULLETIN: M/L-682

## INTRODUCTION

**Micro/Level® Isolators** contain five basic components: the Resilient Cushion (elastomer), Bearing Plate, Support Housing, Leveling Screw and Lock Nut. See Figure 1.

The threaded components (support housing and leveling screw) must be protected and kept free of dents, nicks and debris at all times or jamming of the leveling screw in the support housing may result.

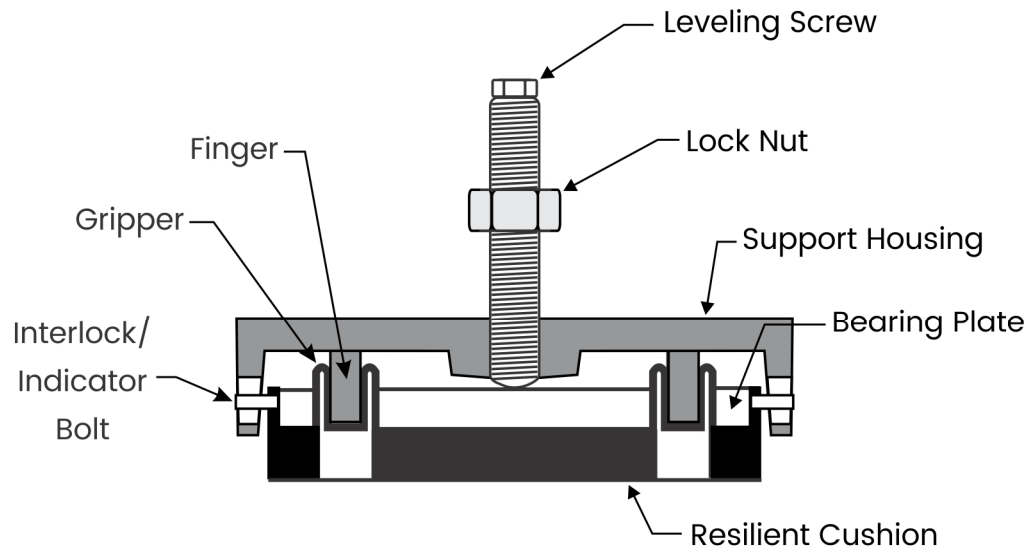


Figure 1

## TO REMOVE THE RESILIENT CUSHION

1. The Micro/Level Isolator will first have to be removed from under the machine. Use a lifting device (hydraulic jack, hand jack, etc.) under the machine base near the isolator to remove the load on the Isolator.
2. Loosen the Lock Nut and remove the Leveling Screw by turning it counterclockwise.
3. Lift the machine high enough to slide the Isolator out from under the machine.
4. Remove the Isolator. Lifting holes are provided in the sides of the Isolator.
5. Inspect the Leveling Screw to make sure that the threads are in good condition and free from any nicks, dents and debris.
6. Clean the Leveling Screw with a dry cloth. Use mineral spirits if necessary.
7. Store the Leveling Screw in an area where it will not get damaged or contaminated.

## TO REMOVE THE RESILIENT CUSHION

8. Turn the Isolator over so that the Resilient Cushion is on top.
9. Starting in one corner of the Resilient Cushion, insert a flat blade screwdriver between the inside wall of the Housing and the Resilient Cushion. See Figure 2.
10. Gently pry the Resilient Cushion away from the Bearing Plate, just enough to wedge the end of the screwdriver between the Resilient Cushion and the Bearing Plate. See Figure 3.

*Note: The resilient members are glued to the bearing plates on models BFM2660 and larger. More effort will be required to remove these resilient cushions.*

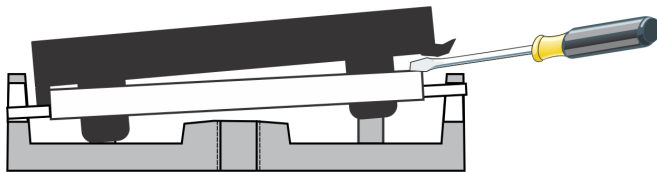


Figure 3

11. Insert a second screwdriver on the opposite side of the Gripper as per Figure 4.
  12. Lift and pry both screwdrivers until the Resilient Cushion separates from the Bearing Plate and the Housing Finger. Take care not to damage the Gripper of the Resilient Member.
13. Repeat Steps 9 to 12 for the remaining three corners until the Resilient Member is completely free of the Bearing Plate.
  14. Clean and Inspect the Bearing Plate. Replace if damaged.

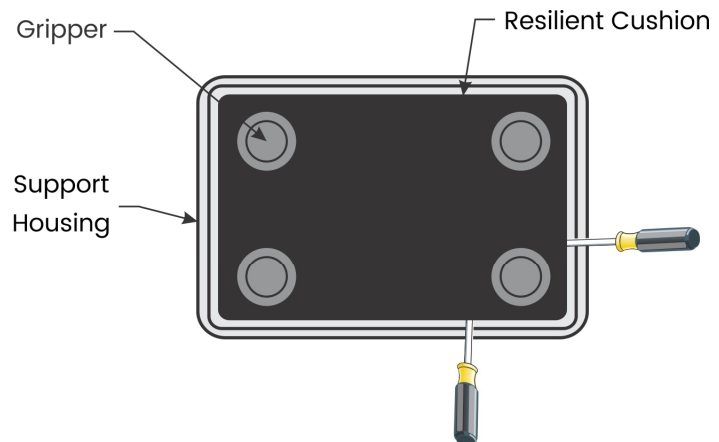


Figure 4

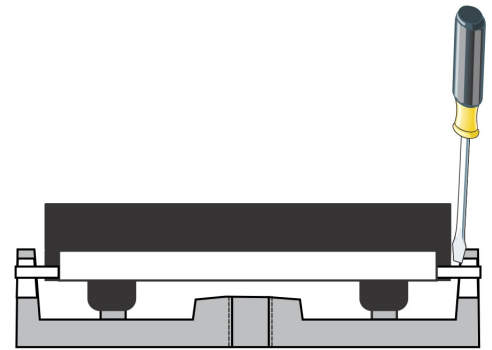


Figure 2

## TECHNICAL BULLETIN: M/L-682

---

### REASSEMBLING THE MICRO/LEVEL ISOLATOR

15. Unpack the new Resilient Cushion and Isolator Nameplate.
16. With the Isolator Housing and Bearing Plate Assembly still turned upside down, align the holes in the Bearing Plate with the Fingers of the Housing. See Figure

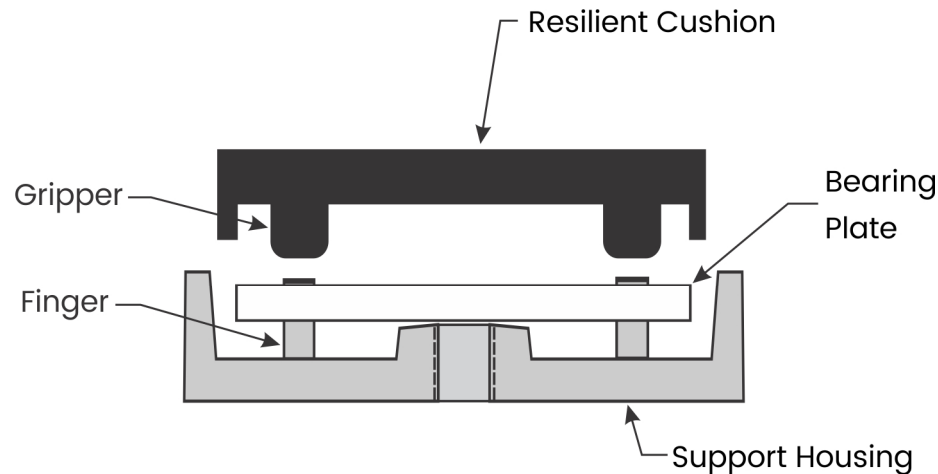


Figure 5

17. Align the Grippers of the Resilient Cushion with the Housing Fingers and press downward until all the parts come together.
18. Press the bottom of each Gripper over each Finger until the void between them is removed.
19. Remove the old Isolator Nameplate and replace with the new one.
20. Turn Isolator over and reinstall under the machine.
21. Repeat until all Resilient Cushions are changed.
22. Refer to “*Leveling and Installation Instructions for Micro/Level Isolators*” (Technical Bulletin M/L- 674) to reinstall your Micro/Level Isolators.

---

Please contact us if you have any questions or need further information.

Vibro/Dynamics LLC  
2443 Braga Drive, Broadview, IL 60155-3941  
E-Mail: [vibro@vibroynamics.com](mailto:vibro@vibroynamics.com)

1-800-842-7668 (USA only)  
1-708-345-2050 Tel.  
1-708-345-2225 Fax