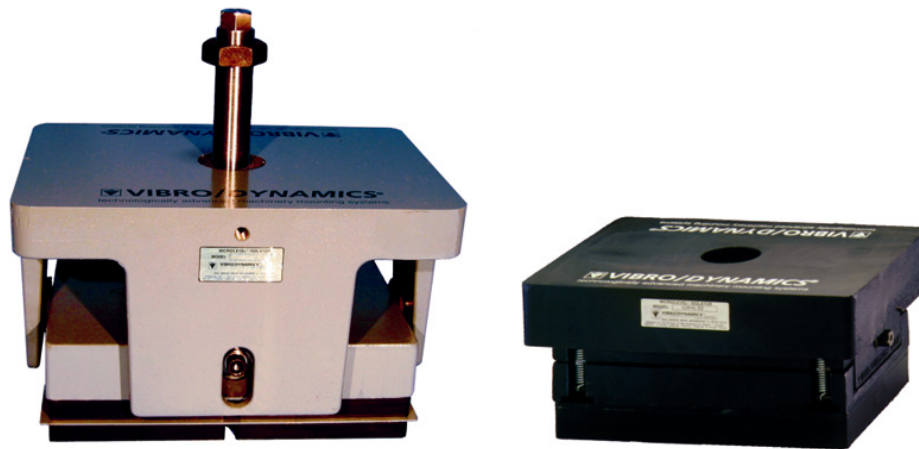


Instructions for Replacing Modular Resilient Member (MRM) Elastomers For 16W, 24W, WXL, MXL and HXL Micro/Level® Isolators



Vibro/Dynamics Technologically Advanced Machinery Mounting Systems are an investment in productivity and efficiency. To realize the full potential of your investment, familiarize yourself with these instructions and use them as a reference while changing the resilient cushions.

After completing the MRM Elastomer Change, follow one of the appropriate Leveling and Installation Instructions:

- MXL (ML-683),
- Wedge Isolators (ML-685)
- WXL (ML-701)

INTRODUCTION

Vibro/Dynamics® Isolators using Modular Resilient Members (MRMs) vary in design. Micro/Level® Wedge mounts have MRMs that bolt directly to the bottom of the mounts. Simply turn the mount over to access the fastening bolt shown in Photo 1.

MXL, HXL and WXL isolator models have MRMs that bolt directly to a bearing or sub plate. It is recommended that the bearing plate be removed from the support housing for easier handling. Remove the four threaded Interlock Bolts. See Figure 1.

Once the interlock bolts are removed, simply lift the support housing off of the bearing plate and turn the bearing plate over to expose the MRM fastening bolt shown in Photo 1.

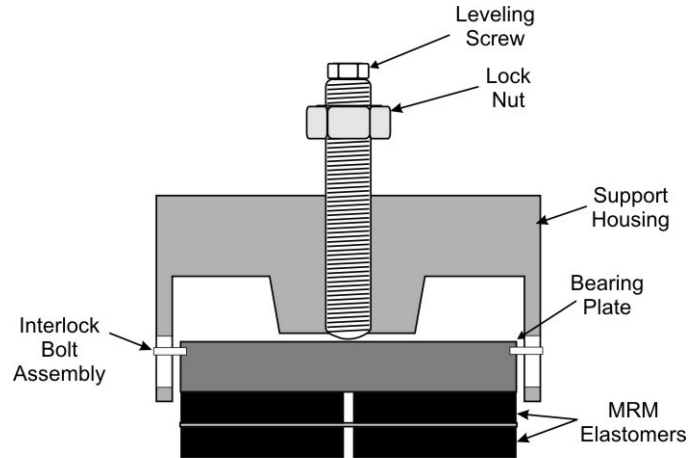
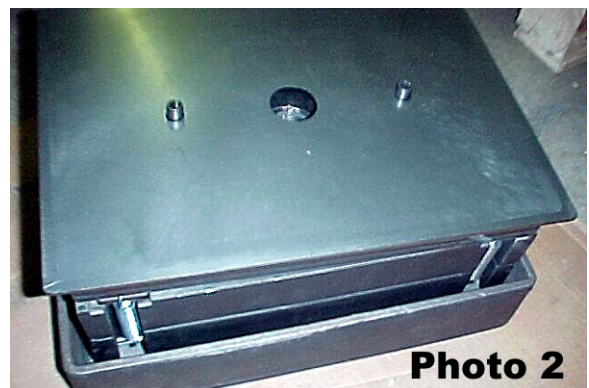
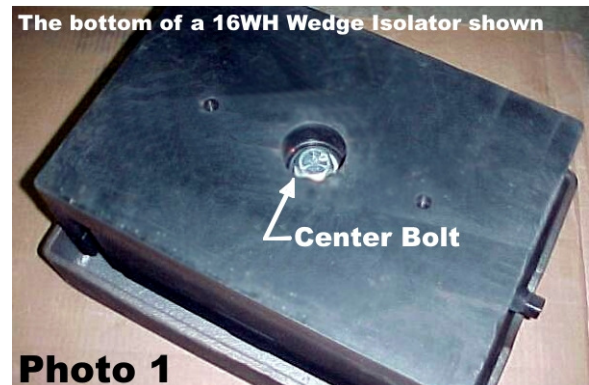


Figure 1

Removing the MRM Elastomers

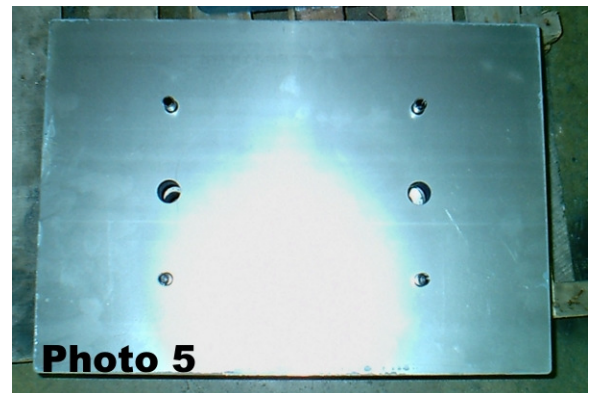
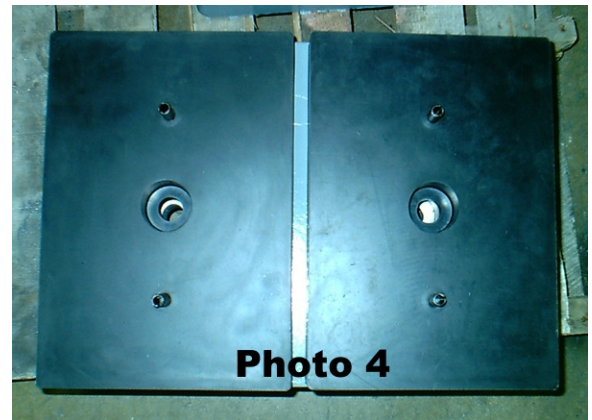
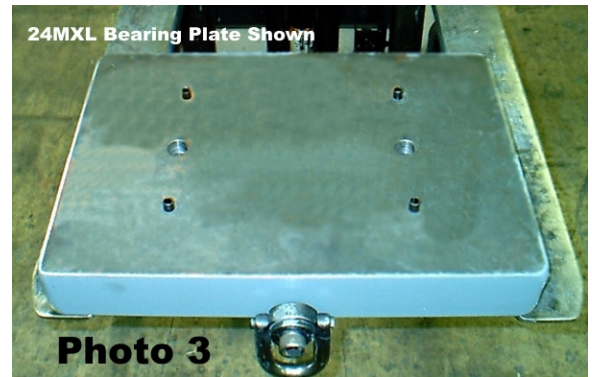
1. Remove the $\frac{3}{4}$ " center fastening bolt(s) with a 1.125" (28 mm) socket. See Photo 1. On isolator models having bearing plates, this requires holding the lock nut in the bearing plate counterbore on the opposite side.
Note: 24W Wedge and MXL Micro/Level Isolators have more than one MRM bolted to the bottom of the isolator.
2. The elastomer(s) can now be removed. A slight amount of prying may be required.
3. Some isolators may have more than one layer of MRM elastomers. These models have an intermediate plate between the MRM layers. See Photo 2. Simply lift and remove the plate to expose the underlying layer(s) of MRM elastomers.
4. Repeat process until all MRMs are removed.



TECHNICAL BULLETIN: M/L-673

Reassembling the Isolator

5. Make sure that all the tension pins are still in the bottom of the wedge isolator or bearing plate as per Photo 3.
6. Align the MRM pin holes, opposite the center counterbore side, with the tension pins protruding from the isolator or bearing plate, and press down until the parts come together.
7. If multiple layers of MRMs are being assembled, insert pins into the bottom of the MRMs as shown in Photo 4 and then install intermediate plate over the top. See Photo 5. Repeat for additional MRM layers.
8. Once all of the layers are assembled, fasten together using the new bolts, washers and lock nuts. The bolt head *must* be in the center counterbore of the MRM. Tighten to 150 ft-lbs.
Caution! *The lock nuts **must be** on the counterbore side of the bearing plate to provide adequate clearance.*
9. Complete the assembly of the isolator.
10. Apply new isolator nameplates, if appropriate.
11. Reinstall the isolators following one of the appropriate Leveling and Installation Instructions.
 - MXL (ML-683),
 - Wedge Isolators (ML-685)
 - WXL (ML-701)



For further information please contact
Vibro/Dynamics LLC
2443 Braga Drive, Broadview, IL 60155
Phone: 708-345-2050
Toll Free: 800-842-7668
Fax: 708-345-2225

Copyright 2004-2019 Vibro/Dynamics LLC
All Rights Reserved