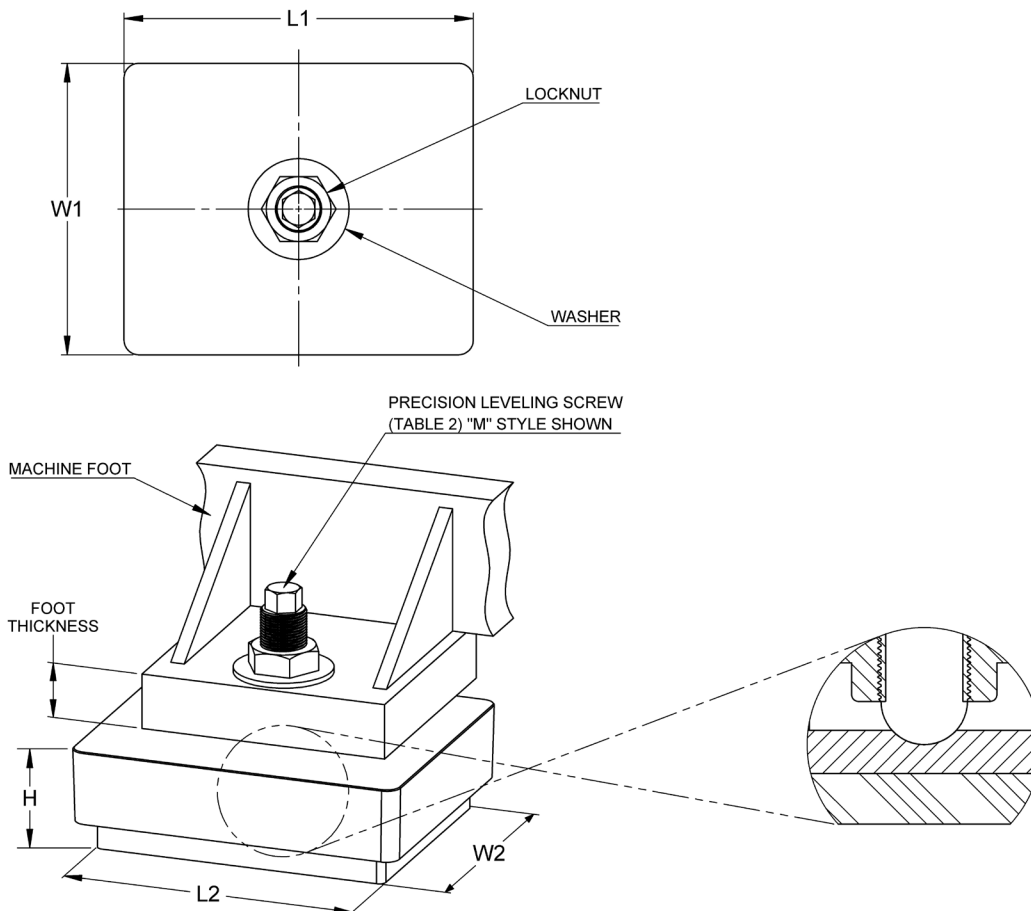




H-Style Isolators are recommended when less horizontal motion is desired.

- Elastomer vibration & shock mount
 - protects environment against transmitted vibration & shock
 - protects sensitive equipment from incoming vibration & shock
 - faster, easier installations compared to grouting & anchoring
- Vertical leveling screw
 - secures mount to machine foot
 - provides precision leveling
 - compensates for sloping floor
- Proper machine support
- Proprietary elastomer cushions
 - oil and chemical resistant
 - multiple hardness & thickness for better isolation effectiveness
 - neoprene, nitrile standard compounds
- Meets OSHA anchoring requirements



TYPICAL APPLICATIONS

- | | | | |
|---------------------------|----------------|---------------------|---------------------|
| • Presses, Mechanical | • Press brakes | • Swagers | • Cold Headers |
| • Forging Presses | • Shears | • Broaching | • Vertical Lathes |
| • Metal Container Presses | • Grinders | • Die Casters | • Machining Centers |
| • Turret Punch Presses | • Mills | • Injection Molders | • Generators |

Isolator		L1		W1		L2		W2		H ±1/8" (3mm)						Weight	
Series	Model	Minimum		Maximum		Installed											
		inch	mm	inch	mm	inch	mm	inch	mm	inch	mm	inch	mm	lbs	Kg		
9H	9M580H	10.3	262	8.3	211	9.3	236	7.3	185	3.75	95.3	4.50	114.3	4.13	104.9	32	15
	9M680H	10.3	262	8.3	211	9.3	236	7.3	185	3.75	95.3	4.50	114.3	4.13	104.9	32	15
	9M780H	10.3	262	8.3	211	9.3	236	7.3	185	3.75	95.3	4.50	114.3	4.13	104.9	32	15
	9M880H	10.3	262	8.3	211	9.3	236	7.3	185	3.75	95.3	4.50	114.3	4.13	104.9	32	15
	9L180H	10.3	262	8.3	211	9.3	236	7.3	185	3.13	79.5	3.88	98.6	3.51	89.2	32	15
	9L250H	10.3	262	8.3	211	9.3	236	7.3	185	3.13	79.5	3.88	98.6	3.51	89.2	32	15
	9L350H	10.3	262	8.3	211	9.3	236	7.3	185	3.13	79.5	3.88	98.6	3.51	89.2	32	15
	9K225H	10.3	262	8.3	211	9.3	236	7.3	185	2.75	69.9	3.50	88.9	3.13	79.5	32	15
	9K275H	10.3	262	8.3	211	9.3	236	7.3	185	2.75	69.9	3.50	88.9	3.13	79.5	32	15
	9K375H	10.3	262	8.3	211	9.3	236	7.3	185	2.75	69.9	3.50	88.9	3.13	79.5	32	15
9K500H	10.3	262	8.3	211	9.3	236	7.3	185	2.75	69.9	3.50	88.9	3.13	79.5	32	15	
10H	10M800H	12.1	307	10.1	257	10.7	272	8.7	221	4.00	101.6	4.75	120.7	4.38	111.3	57	26
	10M1200H	12.1	307	10.1	257	10.7	272	8.7	221	4.00	101.6	4.75	120.7	4.38	111.3	57	26
	10KM1200H	12.1	307	10.1	257	10.7	272	8.7	221	4.25	108.0	5.00	127.0	4.50	114.3	57	26
	10L200H	12.1	307	10.1	257	10.7	272	8.7	221	3.38	85.9	4.13	104.9	3.75	95.3	57	26
	10L450H	12.1	307	10.1	257	10.7	272	8.7	221	3.38	85.9	4.13	104.9	3.75	95.3	57	26
	10L600H	12.1	307	10.1	257	10.7	272	8.7	221	3.38	85.9	4.13	104.9	3.75	95.3	57	26
	10L900H	12.1	307	10.1	257	10.7	272	8.7	221	3.38	85.9	4.13	104.9	3.75	95.3	57	26
	10LK900H	12.1	307	10.1	257	10.7	272	8.7	221	3.63	92.2	4.38	111.3	4.00	101.6	57	26
	10K650H	12.1	307	10.1	257	10.7	272	8.7	221	3.25	82.6	4.00	101.6	3.63	92.2	57	26
	10K950H	12.1	307	10.1	257	10.7	272	8.7	221	3.25	82.6	4.00	101.6	3.63	92.2	57	26

Leveling Screw	Foot Thickness Up To:		Weight	
	inch	mm	lbs	Kg
1H6	2.3	58	1.5	0.7
1.25H8	4.1	104	3.1	1.4
1.25H12	8.7	221	4.3	2.0
<i>Custom Lengths are Available</i>				

10 K950 H - 1.25 H 10

- ISOLATOR SERIES •
- RESILIENT CUSHION •
- BEARING PLATE MODIFICATION •
- SCREW LENGTH (inches) •
- "H" MILLED HEAD WITH BALL END •
- SCREW DIAMETER (inches) •

NOTE: Isolator data subject to change without notice.

10/10/2023

